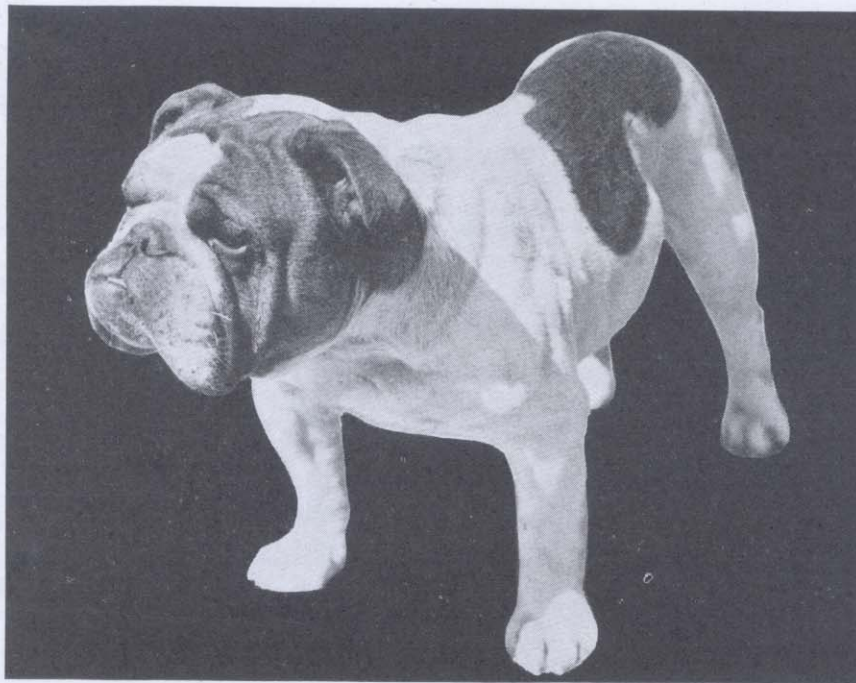


Official Standard Bulldog

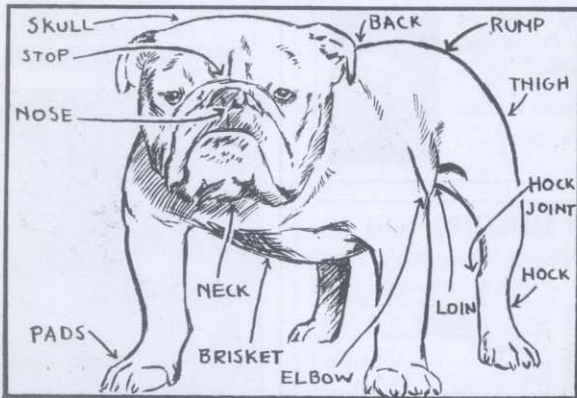


CH. LIMEHOUSE HAPPY HOOLIGAN

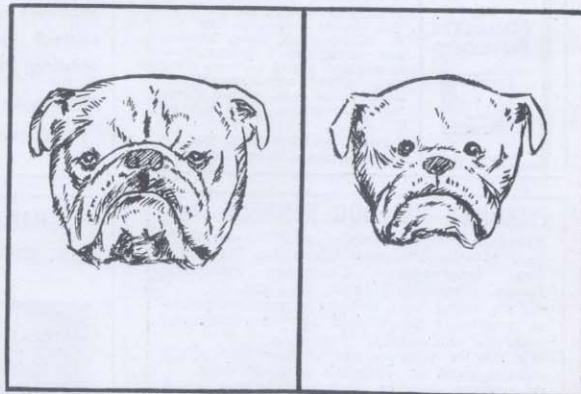
MALE OWNED BY CONWAY H. OLMSTED, WAYSTON KENNELS, 8968 CHESTNUT STREET, RIVER GROVE, ILLINOIS.

Best of Breed, Westminster Kennel Club, February 1934. Balance of championship points won in 1934 at Washington, Des Moines and Philadelphia in 1935. He has won best of breed at Minneapolis, Buffalo, Cincinnati, St. Louis, Chicago and St. Paul, where he also won best in show, all breeds.

He possesses a very massive head with broad, well turned up underjaw giving proper "layback." Large, flat brick-shaped skull, unusually large "barrel" ribs, and short roach back.



THE IDEAL BULLDOG and names of **EXTERNAL ANATOMY.** Study this sketch and photograph above for eye comparison as you read the printed standard hereon, which gives basic knowledge for detecting faults and pointing the way to breeding of better specimens.



Bulldog head. **LEFT: IDEAL;** heavily wrinkled, skull broad and square, cheeks side ways, eyes low, ears high set. **RIGHT: FAULTY;** jaws not undershot, small nostrils, ears low, skull round, eyes too close together.

Complete Official Standard of Bulldog

(As adopted by the Bulldog Club of America)

GENERAL APPEARANCE, ATTITUDE, EXPRESSION, ETC.—The perfect Bulldog must be of medium size and smooth coat; with heavy, thick-set, low-slung body, massive short-faced head, wide shoulders and sturdy limbs.

The general appearance and attitude should suggest great stability, vigor and strength. The disposition should be equable and kind, resolute and courageous (not vicious or aggressive), and demeanor should be pacific and dignified. These attributes should be countenanced by the expression and behavior.

GAIT—The style and carriage are peculiar, his gait being a loose-jointed, shuffling, sidewise motion, giving the characteristic "roll." The action must, however, be unrestrained, free and vigorous.

PROPORTION AND SYMMETRY—The "points" should be well distributed and bear good relation one to the other, no feature being in such prominence from either excess or lack of quality that the animal appears deformed or illy proportioned.

INFLUENCE OF SEX—In comparison of specimens of different sex, due allowance should be made in favor of the bitches, which do not bear the characteristics of the breed to the same degree of perfection and grandeur as do the dogs.

SIZE—The size for mature dogs is about 50 pounds; for mature bitches about 40 pounds.

COAT—The coat should be straight, short, flat, close, of fine texture, smooth and glossy. (No fringe, feather or curl.)

COLOR OF COAT—The color of coat should be uniform, pure of its kind and brilliant.

The various colors found in the breed are to be preferred in the following order:

- (1) Red brindle, (2) all other brindles, (3) solid white, (4) solid red, fawn or fallow, (5) piebald, (6) inferior qualities of all the foregoing.

NOTE—A perfect piebald is preferable to a muddy brindle or defective solid color.

Solid black is very undesirable, but not so objectionable if occurring to a moderate degree in piebald bitches. The brindles to be perfect should have a fine, even and equal distribution of the composite colors. In brindles and solid colors a small white patch on the chest is not considered detrimental. In piebalds the color patches should be well defined, of pure color and symmetrically distributed.

SKIN—The skin should be soft and loose, especially at the head, neck and shoulders.

WRINKLES AND DEWLAP—The head and face should be covered with heavy wrinkles, and at the throat, from jaw to chest, there should be two loose pendulous folds, forming the dewlap.

SKULL—The skull should be very large, and in circumference, in front of the ears, should measure at least the height of the dog at the shoulders.

Viewed from the front, it should appear very high from the corner of the lower jaw to the apex of the skull, and also very broad and square.

Viewed at the side, the head should appear very high, and very short from the point of the nose to occiput.

The forehead should be flat (not rounded or "domed"), neither too prominent nor overhanging the face.

CHEEKS—The cheeks should be well rounded, protruding sideways and outward beyond the eyes.

STOP—The temples or frontal bones should be very well defined, broad, square and high, causing a hollow or groove between the eyes. This indentation, or "stop," should be both broad and deep and extend up the middle of the forehead, dividing the head vertically, being traceable to the top of the skull.

EYES AND EYELIDS—The eyes, seen from the front, should be situated low down in the skull, as far from the ears as possible, and their corners should be in a straight line at right angles with the stop. They should be quite in front of the head, as wide apart as possible, provided their outer corners are within the outline of the cheeks when viewed from the front.

They should be quite round in form, of moderate size, neither sunken nor bulging, and in color should be very dark.

The lids should cover the white of the eyeball, when the dog is looking directly forward, and the lid should show no "haw."

EARS—The ears should be set high in the head, the front inner edge of each ear joining the outline of the skull at the top back corner of skull, so as to place them as wide apart, and as high, and as far from the eyes as possible.

In size they should be small and thin. The shape termed "rose ear" is the most desirable. The "rose ear" folds inward at its back lower edge, the upper front edge curving over, outwards and backwards, showing part of the inside of the burr. (The ears should not be carried erect or "prick-eared" or "buttoned" and should never be cropped.)

FACE—The face, measured from the front of the cheek bone to the tip of the nose, should be extremely short, the muzzle being very short, broad, turned upwards and very deep from the corner of the eye to the corner of the mouth.

NOSE—The nose should be large, broad and black, its tip being set back deeply between the eyes.

The distance from bottom of stop, between the eyes, to the tip of nose should be as short as possible and not exceed the length from the tip of nose to the edge of under lip.

The nostrils should be wide, large and black, with a well-defined line between them. (The parti-color or "butterfly nose" and the flesh-color or "Dudley nose" are decidedly objectionable, but do not disqualify for competition.) Amended at a special meeting of Club, held September 5, 1914, to read: Any nose other than black is objectionable and "Dudley" or flesh-colored nose absolutely disqualified from competition.

CHOPS—The chops or "fews" should be thick, broad, pendent and very deep, completely overhanging the lower jaw at each side.

They join the under lip in front and almost or quite cover the teeth, which should be scarcely noticeable when the mouth is closed.

JAWS—The jaws should be massive, very broad, square and "undershot," the lower jaw projecting considerably in front of the upper jaw and turning up.

TEETH—The teeth should be large and strong, with the canine teeth or tusks wide apart, and the six small teeth in front, between the canines, in an even, level row.

NECK—The neck should be short, very thick, deep and strong and well arched at the back.

SHOULDERS—The shoulders should be muscular, very heavy, wide-spread and slanting outward, giving stability and great power.

CHEST—The chest should be very broad, deep and full.

BRISKET AND BODY—The brisket and body should be very capacious, with full sides, well rounded ribs and very deep from the shoulders down to its lowest part, where it joins the chest.

It should be well let down between the shoulders and forelegs, giving the dog a broad, low, short-legged appearance.

The body should be well ribbed up behind with the belly tucked up and not rotund.

BACK—The back should be short and strong, very broad at the shoulders and comparatively narrow at the loins. There should be a slight fall in the back, close behind the shoulders (its lowest part), whence the spine should rise to the loins (the top of which should be higher than the top of the shoulders), thence curving again more suddenly to the tail, forming an arch (a very distinctive feature of the breed), termed "roach-back" or, more correctly, "wheel-back."

FORELEGS—The forelegs should be short, very stout, straight and muscular, set wide apart, with well developed calves, presenting a bowed outline, but the bones of the legs should not be curved or bandy, nor the feet brought too close together.

ELBOWS—The elbows should be low and stand well out and loose from the body.

HINDLEGS—The hindlegs should be strong and muscular and longer than the forelegs, so as to elevate the loins above the shoulders.

Hocks should be slightly bent and well let down, so as to give length and strength from loins to hock.

The lower leg should be short, straight and strong, with the stifles turned slightly outward and away from the body. The hocks are thereby made to approach each other, and the hind feet to turn outward.

FEET—The feet should be moderate in size, compact and firmly set. Toes compact, well split up, with high knuckles and with short and stubby nails.

The front feet may be straight or slightly out-turned, but the hind feet should be pointed well outward.

TAIL—The tail may be either straight or "screwed" (but never curved or curly), and in any case must be short, hung low, with decided downward carriage, thick root and fine tip.

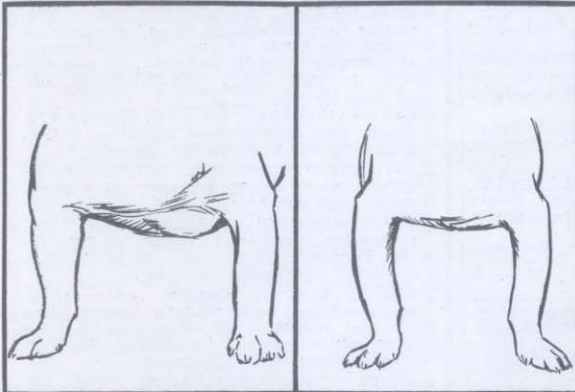
If straight, the tail should be cylindrical and of uniform taper.

If "screwed" the bends or kinks should be well defined, and they may be abrupt and even knotty, but no portion of the member should be elevated above the base or root.

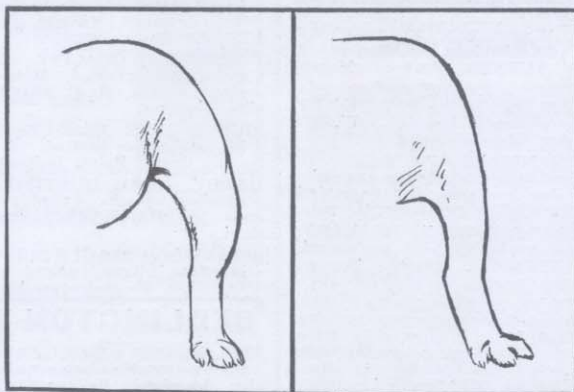
Scale of Points		Teeth	
Proportion and Symmetry	5	Teeth	2
Attitude	3	Total Head	39
Expression	2	Neck	3
Gait	3	Dewlap	2
Size	3	Shoulders	5
Coat	2	Chest	3
Color of coat	4	Ribs	3
General Properties	22	Brisket	2
Skull	5	Belly	2
Cheeks	2	Back	5
Stop	4	Forelegs and elbows	4
Eyes and eyelids	3	Hindlegs	3
Ears	5	Feet	3
Wrinkle	5	Tail	4
Nose	6	Total, Body, Legs, etc.	39
Chops	2		—
Jaws	5	Grand Total	100

BREED TRAITS

BULLDOGS are the most ferocious looking and yet most gentle of all breeds. Children can "poke" out their eyes without ruffling bulldog temper. He is especially affectionate, always comical in looks and acts, and afraid of nothing. His distinctive appearance—massive head, wide front and rolling gait, mark him as England's mascot and one of America's beloved breeds. He no longer seizes bulls in the ring by the nose, but still retains his bulldog grip.



Bulldog front. LEFT: IDEAL; chest wide and deep, brisket well below elbows, front legs straight, elbows out. RIGHT: FAULTY; narrow high brisket, Chipendale or crooked legs, elbows too high, front feet turned out too much



Bulldog hindquarters. LEFT: IDEAL; narrow loins, roach back, hindlegs higher than front legs. RIGHT: FAULTY; no tuck up, straight rump, thighs not rounded, stifle turned out too much.

Sketches in this standard by Bert Hanor. Interpretations by Will Judy, Editor of Dog World